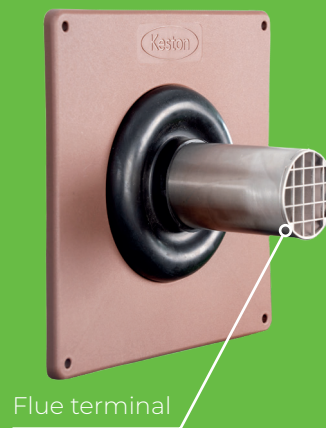
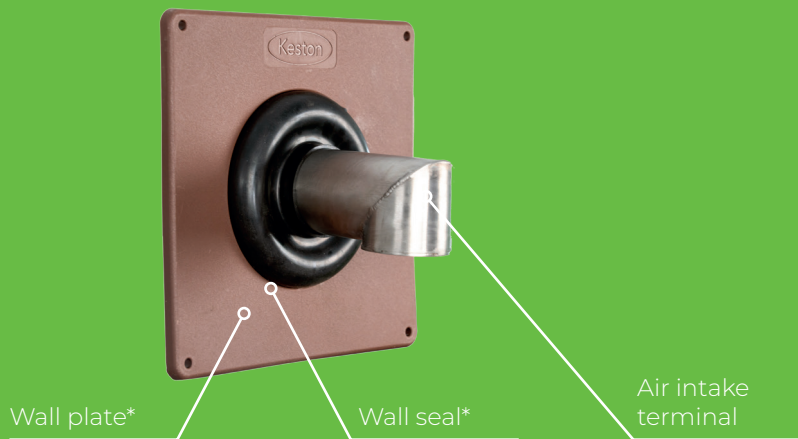


HIGH RISE FLUE KIT



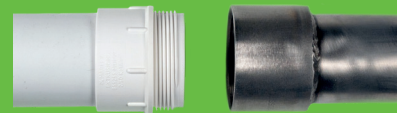
Air intake terminal



Flue terminal



Simple connection to MuPVC / PVC-C flue system within the building. Fittings & thread sealant included in the kit.



Features & specification

High rise flue kit with Air Inlet and Flue Terminal constructed in 316 stainless steel for penetrations through the building fabric.

This kit is required for installations in England and Wales above 18 meters. This is to adhere to the new building regulations. (The Building Regulations 2020, Part B - Fire Safety, Volume

1: Drawings, 2019 edition incorporating 2020 amendments).

This kit is also required for installations in Scotland above 11 meters. This is to adhere to the new building standards technical handbook 2020: domestic buildings (April 2021 Addendum).

PART CODES

UIN	DESCRIPTION
237092	KESTON HIGH RISE FLUE KIT 600MM
237093	KESTON HIGH RISE FLUE KIT 900MM

COMPATIBLE WITH

UIN	DESCRIPTION
228344	KESTON COMBI 2 C30 BOILER
228345	KESTON COMBI 2 C35 BOILER
228384	KESTON SYSTEM 2 S30 BOILER
355006	KESTON AIR TERMINAL FINISHING KIT

DIMENSION & CLEARANCES

